

ECCLES STATION

NEWS

JUNE 2016

NEWS

Passengers travelling through Oxenholme, Cumbria will have a smoother, more reliable journey following a weekend of upgrade work by Network Rail's orange army. Engineers worked day and night over the spring bank holiday on the West Coast main line at Oxenholme where it meets the Windermere branch line. They replaced life-expired track and simplified the track layout to give a smoother, more reliable journey for passengers

The railway re-opened on Monday 30 May with trains once again travelling through the area from midday.



Passengers in the Manchester area are being reminded to check before they travel as work to connect Manchester's two main train stations continues. The Ordsall Chord will link Manchester Victoria and Manchester Piccadilly

stations, significantly improving connections in the region as well as reducing the amount of congestion currently seen at Manchester Piccadilly by 25%. It is due to open in December 2017.

*“From Saturday 28 May until the last service on Monday 30 May, there were changes to certain train services on the Liverpool line. **Additionally, services will be affected on Sunday 12 June.** Customers can travel from Manchester Piccadilly on affected weekends and where possible we will look to provide longer trains to and from Liverpool.”*

Passenger satisfaction has risen to 92 per cent according to the **third Tram Passenger Survey** conducted by Transport Focus. Over 5,000 passengers in Blackpool, Greater Manchester, the West Midlands, Nottingham, Sheffield and Edinburgh were asked about their tram service.

Key findings include:

- Across all six tram networks, overall satisfaction with the journey has increased significantly since 2014, from 90 to 92 per cent.
- The number of passengers saying they were ‘very satisfied’ with their journey has increased, from 53 per cent in 2014 to 57 per cent in 2015.
- Passengers’ rating of value for money of their journey across the networks has seen improvement, now at 69 per cent (61 per cent in 2014).
- While overall journey satisfaction was high, 36 per cent of passengers suggested improvements to their journey. These varied by network, but mostly concerned overcrowding and being able to get a seat, as well as improvements to tram stops.

Our junior reporter, Mrs Oatcake, writes...

Unfortunately for tram users on the Eccles – Manchester line, there is an upcoming closure.....

“DISRUPTION TO METROLINK SERVICES THIS SUMMER DUE TO ESSENTIAL MAINTENANCE AND SECOND CITY CROSSING WORK

Closure of Eccles Metrolink Line for 9 weeks

A major track replacement programme will see the Eccles via MediaCityUK Metrolink line temporarily close this summer. Some sections of track on the

Eccles line are now showing significant wear, particularly on curved rail situated within the highway.

There will be no trams running on the Eccles via MediaCityUK line from 26 June 2016.

Trams are expected to resume running between Deansgate-Castlefield and MediaCityUK from early August, with the rest of the Eccles re-opening in late August.”

If you were planning to travel directly to Manchester using the tram during these dates and can access the platforms at Eccles (or Patricroft) station, then why not try the train as an alternative? [Live departure information here for Eccles....](#)

*On 10th May, during a ceremony at the National Railway Museum in York, GB Railfreight (GBRf) unveiled the name and livery of **locomotive 66779, the last Class 66 to be built for the UK and European markets**. The locomotive has been named “Evening Star”, as was the last BR built steam locomotive, and it has been liveried in lined passenger express ‘Brunswick green.’ The Class 66s have made a major contribution to UK rail freight, transforming reliability since their introduction in 1998. In recognition of these achievements, GBRf has promised to donate 66779 to the National Railway Museum National Heritage Committee at the end of its working life, to be preserved for the benefit of the public.*

It is beginning to look as if the **Settle and Carlisle line will not fully reopen until late 2017**. The landslip by the side of the River Eden north of Armathwaite station may necessitate the construction of a viaduct alongside the river and will cost tens of millions of pounds. Trains are running between Leeds and Appleby (the most attractive part of the line) with a replacement bus from there to Carlisle: as a result, passenger numbers are well down. **A discounted £15 day-return along the entire line is on offer (cheaper for railcard holders).**

OUT AND ABOUT...

...travelled via Sheffield for a visit to the Cathedral city of Lincoln. There is a level crossing where High Street crosses the railway just before the Central railway station. This crossing is busy with many passenger trains and also heavy goods trains avoiding the East Coast main line. Network rail is constructing a bridge for pedestrians across the road from the signal box:



The attractive buildings at the railway station are being renovated. It would seem there is long overdue investment activity going on everywhere on the network!



High Street takes one through the city shopping area towards the Cathedral.





The ascent towards the cathedral seems to go on and on, getting steeper all the time.





...By TRAIN from ECCLES STATION.

ARTICLES

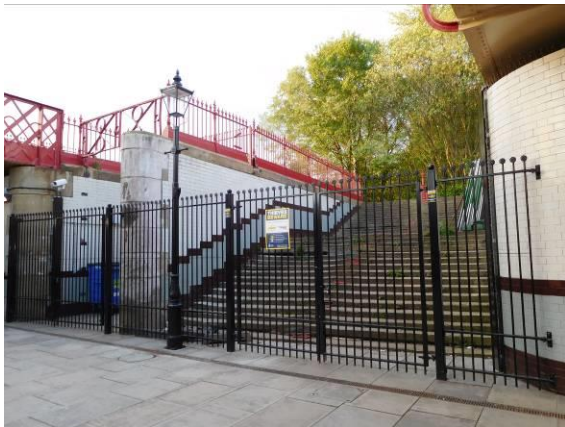
Rochdale Revamp.

An old entrance to the railway station has been reopened at Rochdale railway station on the side facing away from the town. The work was funded by Rochdale Borough Council. This “new” entrance means that passengers from a substantial residential area now have direct access to the trains instead of a long walk round either end of the railway station.

The renovated “new” old underpass has old photographs of the railway on display.



The tidied up but still disused staircases show what a large railway station this once was:



Upstairs there is much Network Rail activity cutting down the trees, realigning track and creating a bay platform for turning round trains from the Manchester direction:



Franchise Consultation.

Passengers, businesses and local councils are being asked for their views on how the Inter City West Coast (ICWC) line can deliver better rail services between London, Birmingham, Manchester, Liverpool, Glasgow, Edinburgh, and Holyhead, in a government [consultation](#) launched on 10 May 2016. This is ahead of the start of the competition for a new operator later this year. The winning train operating company will be announced in November 2017, in time for the franchise to begin in April 2018.

Views are sought on how the next operator can:

- improve customer satisfaction and experience, including providing helpful information at times of disruption
- provide train services that better meet the needs of passengers and communities they serve
- make the railway more accessible for all, including innovative ways to improve ticketing, fares and paying for journeys

The 12-week [consultation](#) closes on 2 August 2016 and the full document can be viewed at:

https://www.gov.uk/government/uploads/system/uploads/attachment_data/file/523169/icwc-consultation-english.pdf

Responses can be given online at www.smartsurvey.co.uk/s/icwc-franchise

BOOK REVIEW:

'THE WORLD THE RAILWAYS MADE.'

by Nicholas Faith ISBN 9781781858363

Head of Zeus £20.00 Available at Eccles Library.

The book has a few pages of introduction by Christian Wolmar. The work that follows covers railway history in almost every conceivable field: society, politics, war, finance, engineering, imperialism, and capitalism, to mention a few. Such a book is welcome in bringing to view the results of many areas of research into the impact of railways on the nature of the modern world and provides many interesting insights.

Of necessity in such a wide ranging book the evidence is often presented very sketchily. There are many brief glimpses of great characters and events that can leave the reader feeling that the coverage should be more expansive, but to do so would turn four hundred pages into a thousand.

The book is available at Eccles Library.

Stop press

Our junior reporter, Mrs Oatcake, has interviewed FRECCLES about the 'Mystery of the Missing Website.....'

FRECCLES say "At the present time, we are not sure what is going on with our freccles.org.uk website as it appears to have vanished! Our Webmaster is diligently and patiently working on finding out where it has gone to and planning on restoring it to rude health on its return.

It also means that the corresponding webmail address has disappeared, so those who wish to do so should use 'freccles@btinternet.com' in all email communications.

FRECCLES also maintains a web presence on [Facebook](#) and [Twitter](#) so if you are itching to see some cyberspace FRECCLES, why not see us there until, as those of a certain age might remember, 'normal service is resumed' "

Eccles Station News welcomes feedback from readers. Please do not hesitate to send in your own views, photos or snippets of news to the e-mail address below.



FRECCLES

freccles@btinternet.com tel: 0161 789 5016

(You might be able to in the near future.... Mrs O)

Visit our website: www.freccles.org.uk

