

# ECCLES STATION

# NEWS

MAY 2016

## NEWS

Gradually the new franchise is showing its presence. The old Northern logos are disappearing off trains and the recorded voice announcements at stations have altered.



Apparently there are to be no new uniforms for the staff for a while though and the timetable leaflets will not look very different (why change something that works?). The new website is <https://www.northernrailway.co.uk/>

*New timetables come in on 15<sup>th</sup> May. There does not seem to be much change for Eccles services but it is always wise to check. The timetable is at:*

[https://be803fe5c416e39d38ae-aa21086260d3bd4e072d597fe09c2e80.ssl.cf3.rackcdn.com/images/timetables/2016-04/may-december/liverpool-manchester\\_airport\\_and\\_warrington\\_bank\\_quay\\_via\\_earlestown-15-150516.pdf](https://be803fe5c416e39d38ae-aa21086260d3bd4e072d597fe09c2e80.ssl.cf3.rackcdn.com/images/timetables/2016-04/may-december/liverpool-manchester_airport_and_warrington_bank_quay_via_earlestown-15-150516.pdf)

During rain The Lake will not form on platform 1 (Manchester-bound) as new transverse drains have been installed near the bottom of the steps. The weather has tested them and they have worked as you can see:

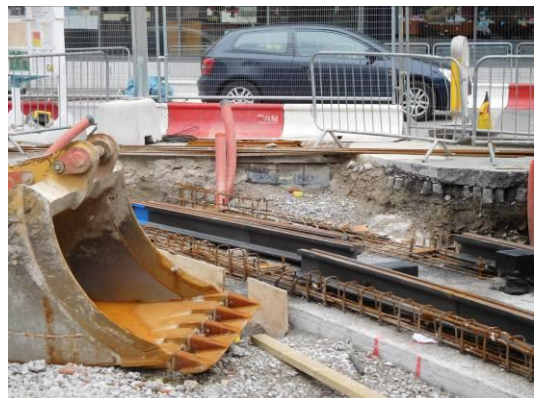


*While on the topic of water a new storage tank has been put in place on the Liverpool platform. This will help the garden group with summer watering instead of always having to carry cans of water from behind the booking office.*





The Metrolink second city crossing continues to extend its rails through Manchester:





## OUT AND ABOUT...



Almost too good to be true is the use of the loco hauled rolling stock between Preston and Carlisle via Barrow and the lovely lake district coast.

The 10.04 train from Preston to Barrow is routinely loco hauled using Direct Rail Services slam door stock



This old rolling stock is so spacious and comfortable that it makes the journey feel a short one. The windows are in register with the four seat tables meaning that you can enjoy the superb views from the opposite window as well as your own!



The trains operate as push pull. Here is a view of the rear cab on the rolling stock:



At Barrow in Furness a quick change of platform gets you onto a loco hauled treat to Carlisle via Workington. As well as views of Lake District Mountains, you pass level crossings and signal boxes, see the hills of Galloway and perhaps even catch a glimpse of Snaefell on the Isle of Man.





The train runs back after only a few minutes at Carlisle or you can return to Preston on a Pendolino on the main line. This is an excellent trip to do when using the good value Rover ticket or Ranger tickets to be found at:

<https://www.northernrailway.co.uk/tickets/explore-cumbria-lake-district>

<https://www.northernrailway.co.uk/tickets/rail-rover-tickets#north-west-rover>

***...By TRAIN from ECCLES STATION.***

## **ARTICLES**

### ***Arriva Makes a Start.***

From 1 April 2016, Arriva has been operating the nine-year Northern franchise contract which will see extensive investment in new and refurbished trains, as well as extra services, increased capacity and a variety of station and ticketing improvements. Alex Hynes will lead Northern's 5,500 employees as managing director of Arriva Rail North Ltd.

Arriva is one of the largest providers of passenger transport in Europe, employing some 55,000 people and delivering more than 2.2 billion passenger journeys every year. It is part of Deutsche Bahn, one of the world's leading passenger transport and logistics service providers. Headquartered in Sunderland, UK, Arriva is responsible for Deutsche Bahn's regional passenger transport services outside Germany. In UK rail, Arriva currently operates CrossCountry, Arriva Trains Wales, Chiltern Railways, London Overground, Grand Central and Tyne & Wear Metro.

Chris Burchell, Managing Director of Arriva's UK Trains Division, said: "We feel hugely privileged to have been given the opportunity to transform travel for passengers across the North of England and to replace the outdated, unpopular Pacer trains as soon as possible. International train manufacturer CAF will build the 281 carriages with the first of the new trains delivered by October 2018. The deal will be financed by Eversholt Rail Group.

The new 100mph trains will include:

- Air conditioning
- Audio and visual on-board passenger information systems
- Power sockets and tables
- Cycle racks
- Toilets
- Digital CCTV systems
- Free Wi-Fi for passengers

#### BOOK REVIEW:

### 'What The INDUSTRIAL REVOLUTION Did For Us'

by Gavin Weightman    ISBN 0563487941    BBC Books

£18.99            Available at Eccles Library.

Gavin Weightman, historian and film-maker has written this book to accompany a television series with the above name. It has a foreword by Dan Cruickshank who presented the series. The book is attractively presented, well illustrated and, as befits a television book, written in an accessible manner.

The coverage is broad rather than deep, ranging across individuals, ideas, industries, weapons, medicine, and the cultural aspects. There is little about the industrial processes, but given the title perhaps that is forgivable. In contrast the reader could reasonably expect there to be more coverage of the great social and political changes that resulted.

Overall this is a successful book – informative and easy to read. **The book is available at Eccles Library.**

## Stop press

**Eccles Station News** welcomes feedback from readers. Please do not hesitate to send in your own views, photos or snippets of news to the e-mail address below.



**FRECCLES**

[info@freccles.org.uk](mailto:info@freccles.org.uk) tel: 0161 789 5016

Visit our website: [www.freccles.org.uk](http://www.freccles.org.uk)

